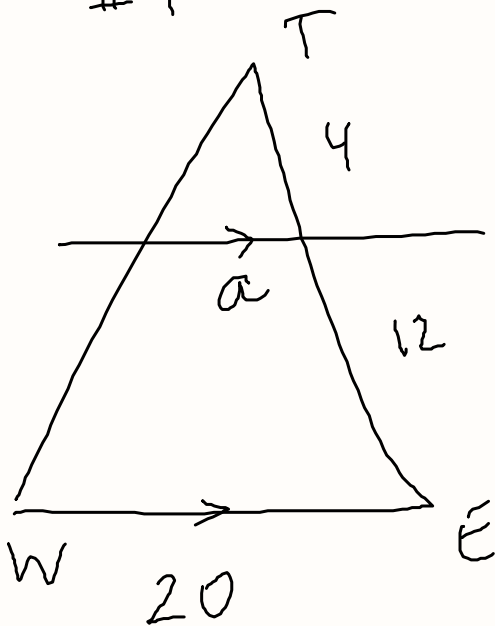


p.607

1

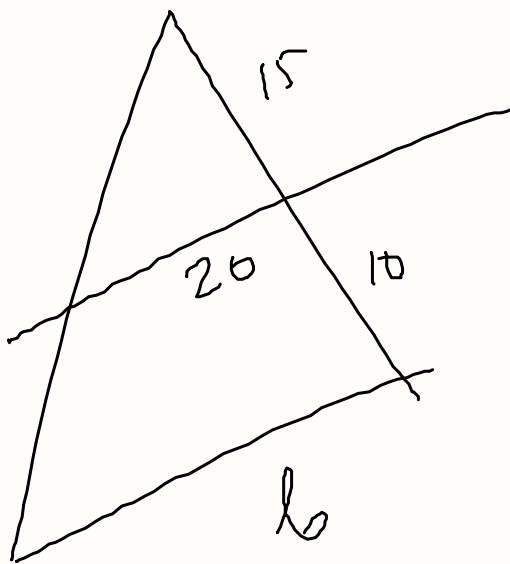


By: Andreu Lucena

$$\frac{4}{A} = \frac{16}{20}$$

$$4 \cdot 20 = 80$$
$$A = 5$$

#2 p. 607



By: Andrea Lucksey

$$\frac{15}{20} = \frac{25}{b}$$

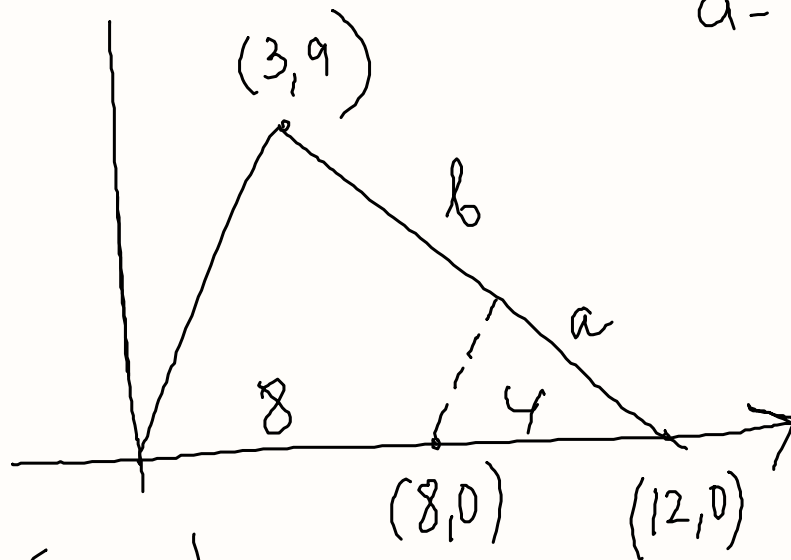
$$20 \cdot 25 = 500$$

$$\frac{15b = 500}{15}$$

$$b = 33.\bar{3}$$

#12 p. 608

$a = ?$ $b = ?$



$$(a + b) = d = \sqrt{(x_2 - x_1)^2 + (y_2 - y_1)^2}$$